

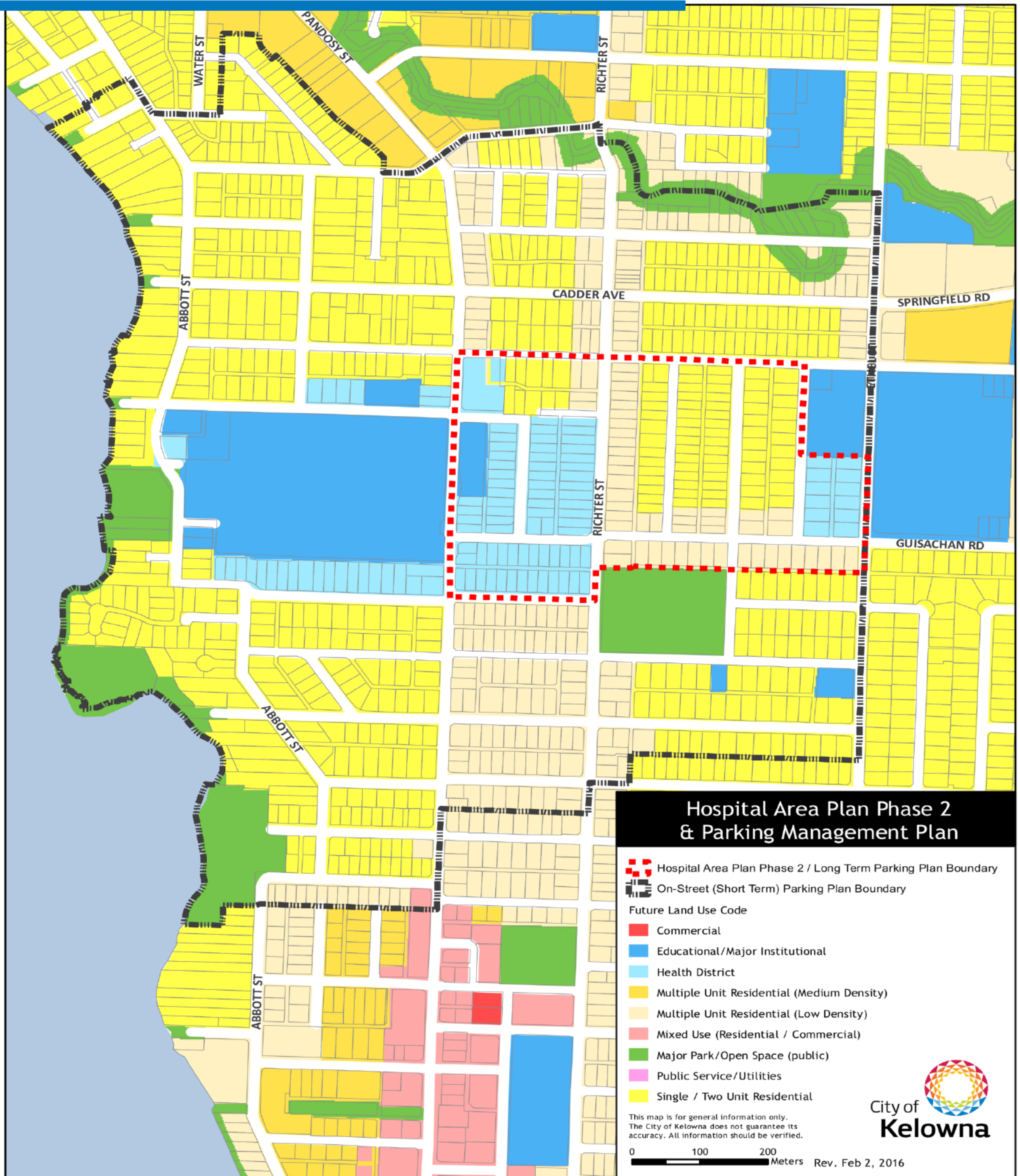
Welcome!

City of Kelowna Hospital Area Plan Open House



Please take a few minutes to browse the topics
and provide your feedback

PROJECT BOUNDARIES



Hospital Area Plan

November 2016

PROJECT BACKGROUND

The City of Kelowna and Interior Health are working closely on this plan to guide future redevelopment opportunities and address transportation needs around Kelowna General Hospital (KGH).

This is a combined land use, transportation and parking strategy with the goal of creating a vibrant Health District that supports hospital-related services while maintaining the integrity of established neighbourhoods.

PHASE 1

Phase 1 considered land use interface issues between KGH and the residential neighbourhoods on the west side of Pandosy Street. Phase 1 outcomes included:

- ▶ Creating a new health services transitional area with properties designated as Health District;
- ▶ Making the new HD3 – Health Services Transitional zone available to property owners who choose to redevelop; and
- ▶ Directing more intensive health services to the larger Health District east of Pandosy Street.

PHASE 2

We are now in Phase 2, which will look at land uses, transportation and parking in the area around KGH. Phase 2 considers:

- ▶ The needs and opportunities around development related to the Hospital; and
- ▶ Transportation and parking improvements to support redevelopment, guided by long-term Land Use and Neighbourhood Transportation Plans.

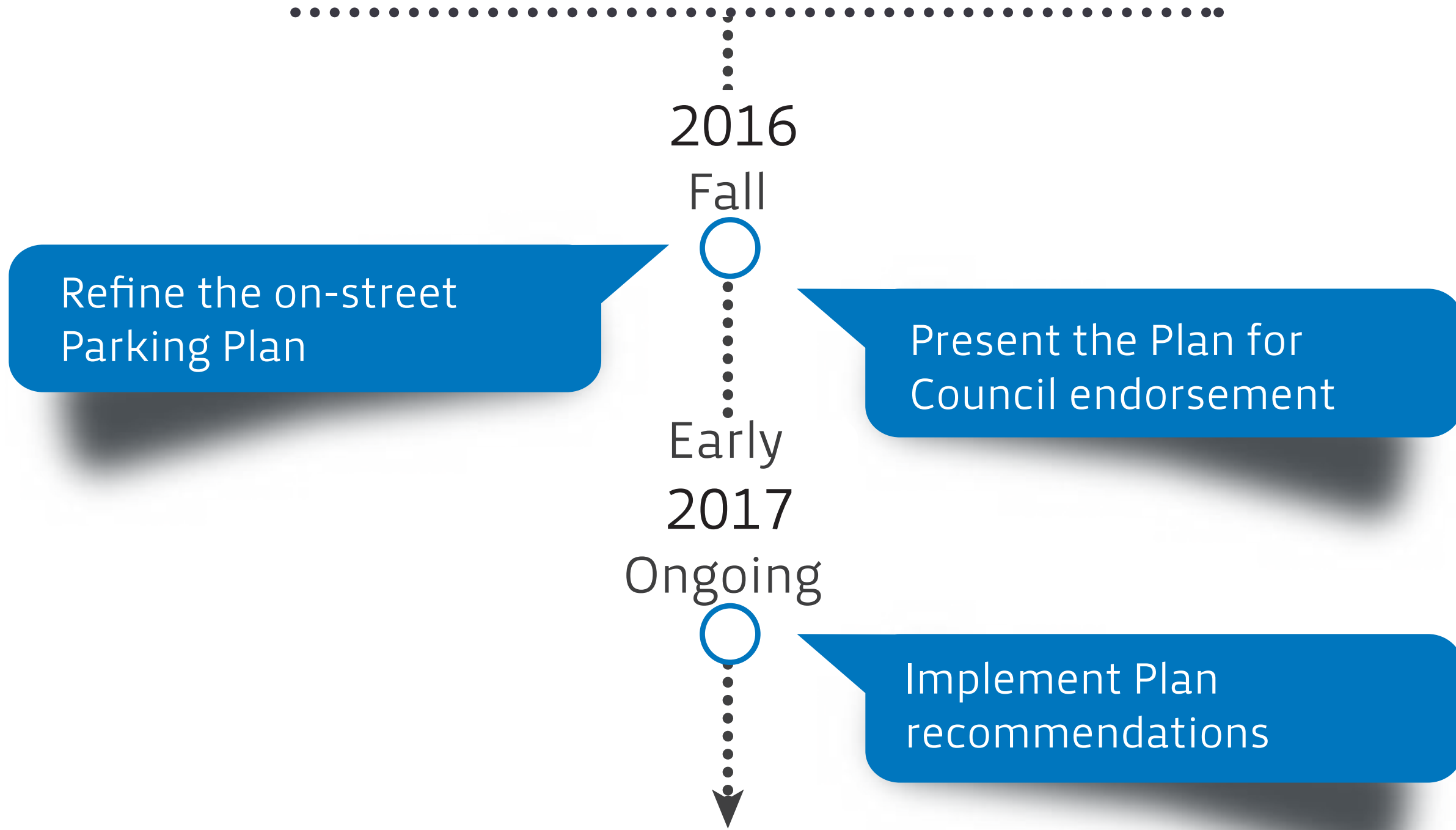
Phase 2 started with the On-Street Parking Plan, focusing on on-street parking as part of the City-wide Parking Management Strategy. The Land Use and Neighbourhood Transportation Plans will develop long-term strategies to guide future growth in the area.

Hospital Area Plan

November 2016

NEXT STEPS

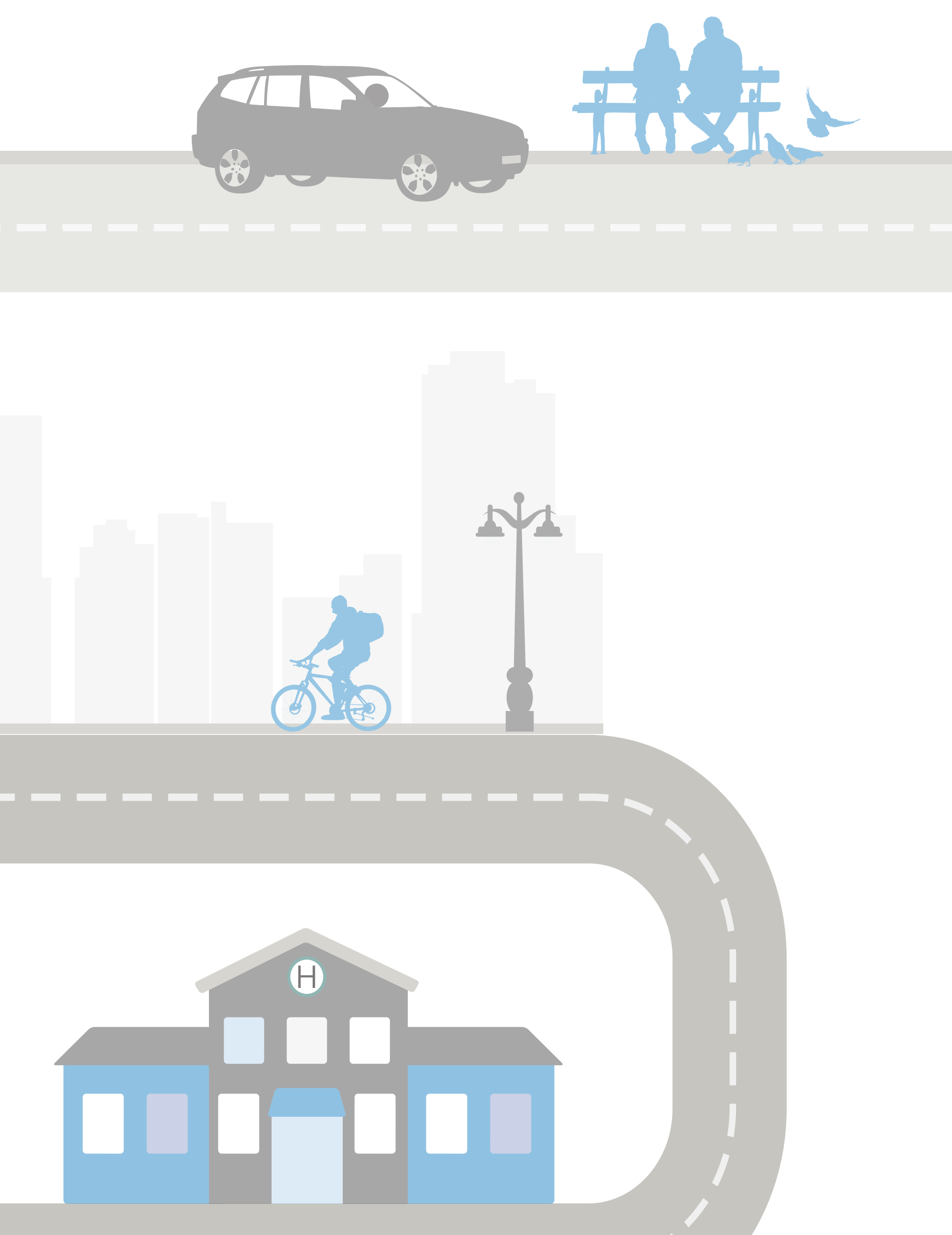
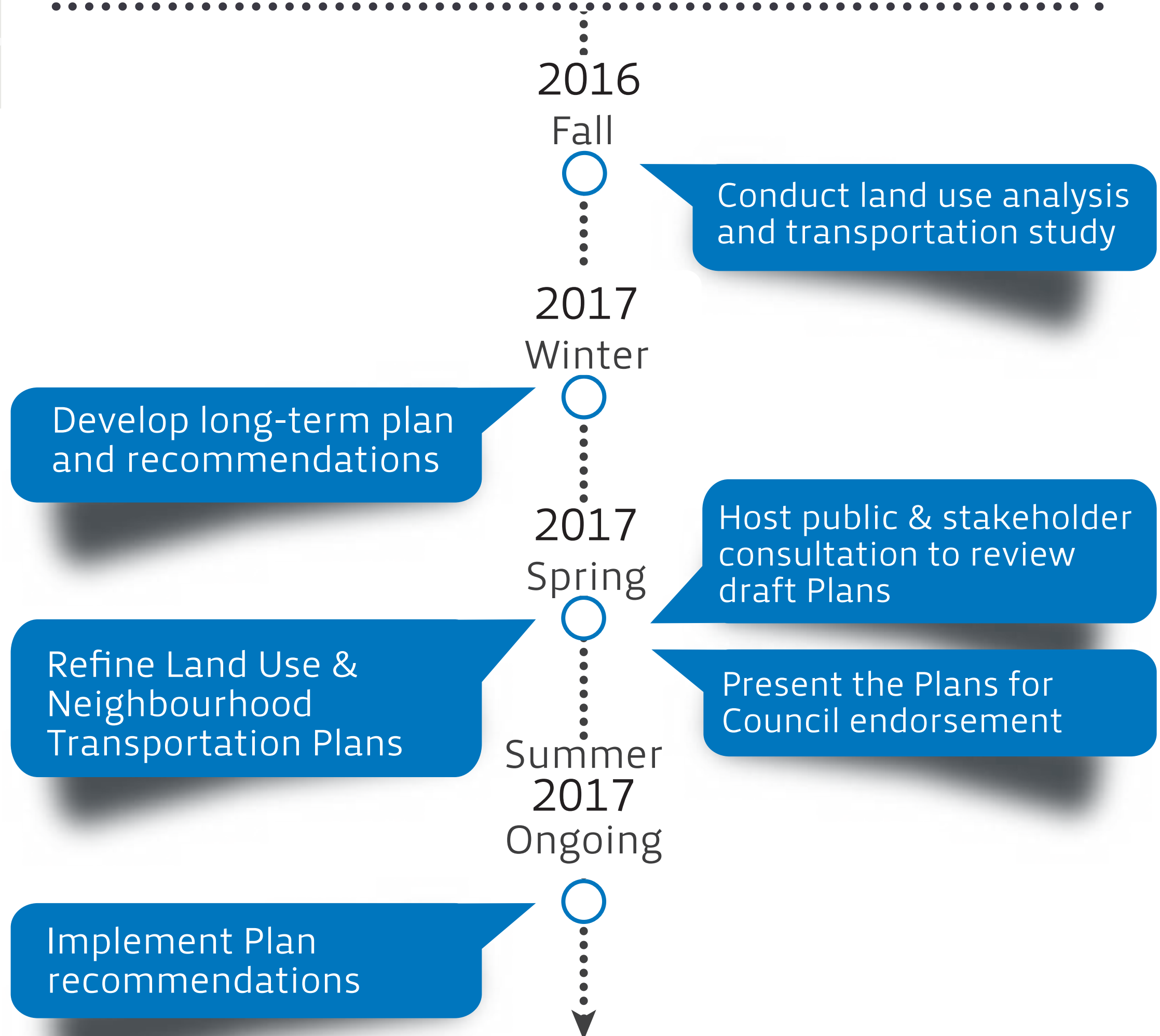
ON-STREET PARKING PLAN



Stay up to date through the project page on the City's website at www.kelowna.ca/planningprojects
Thank You



LAND USE & NEIGHBOURHOOD TRANSPORTATION PLANS



Hospital Area Plan

November 2016

PARKING COUNTS

To establish a baseline understanding of parking supply and demand in the study area and ensure a comprehensive understanding of the parking utilization, data was collected on a variety of weekdays and times.



Parking Turnover Data was Collected:

9:30am - 2:30pm



Occupancy Data was Collected:

9:30am - 2:30pm



1:30am - 3:30am
6:30pm - 8:30pm
8:30pm - 10:30pm

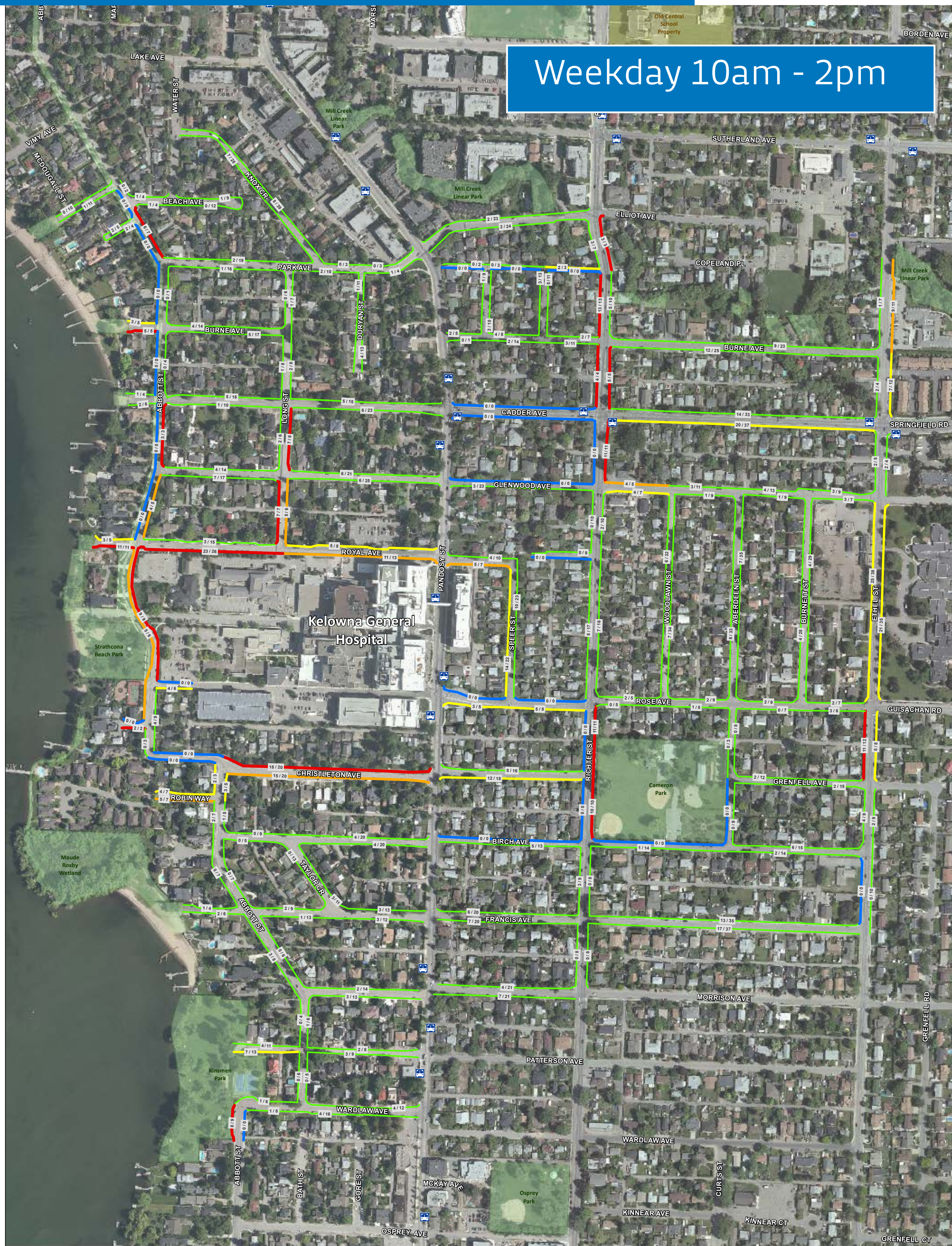



12:00pm - 2:30pm
2:30pm - 5:00pm
5:30pm - 7:30pm



7:30am - 9:30am

CURRENT CONDITIONS - OCCUPANCY





City of Kelowna
Hospital Area
On-Street Parking Plan
Parking Occupancy
(Daytime May 2016)


Legend

Existing Occupancy

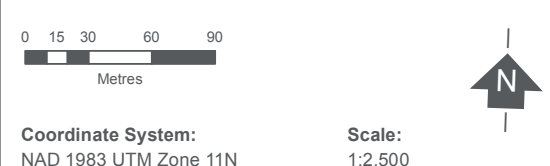
- 0% - 50%
- 51% - 70%
- 71% - 85%
- 86% - 100%
- No Parking

10 / 20 Spaces Occupied / Spaces Available

- Bus Stop
- Parks
- Schools



The accuracy & completeness of information shown on this drawing is not guaranteed. It will be the responsibility of the user of the information shown on this drawing to locate & establish the precise location of all existing information whether shown or not.



0 15 30 60 90
Metres

Coordinate System:
NAD 1983 UTM Zone 11N

Scale:
1:2,500

Data Sources:
Data provided by -
City of Kelowna

Project #: 0467.0424.05
Author: BP
Checked: NA
Status: - DRAFT -
Revision: A
Date: 2016 / 10 / 6

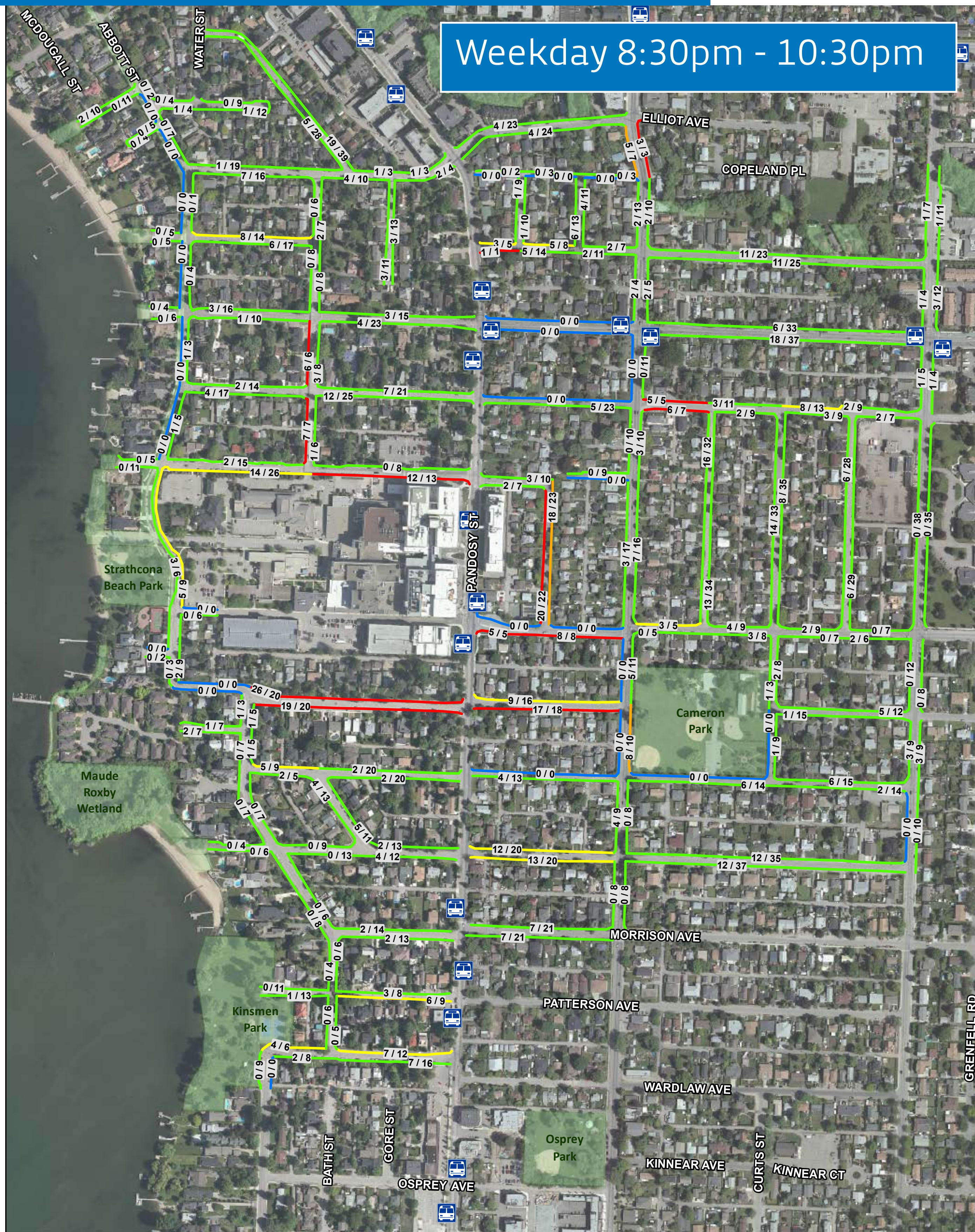
URBAN
systems


FIGURE A1

Hospital Area Plan On-Street Parking

November 2016

CURRENT CONDITIONS - OCCUPANCY





City of Kelowna

Hospital Area
On-Street Parking Plan


Parking Occupancy
(8:30 pm June 2016)

Legend

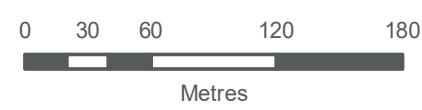
Existing Occupancy

- 0% - 50%
- 51% - 70%
- 71% - 85%
- 86% - 100%
- No Parking
- 10 / 20 Spaces Occupied / Spaces Available


- Bus Stop
- Parks
- Schools



The accuracy & completeness of information shown on this drawing is not guaranteed. It will be the responsibility of the user of the information shown on this drawing to locate & establish the precise location of all existing information whether shown or not.



0 30 60 120 180
Metres




N

Coordinate System: NAD 1983 UTM Zone 11N
Scale: 1:5,000

Data Sources:
Data provided by - City of Kelowna

Project #: 0467.0424.05
Author: RB
Checked: XX
Status: **- DRAFT -**
Revision: A
Date: 2016 / 10 / 6



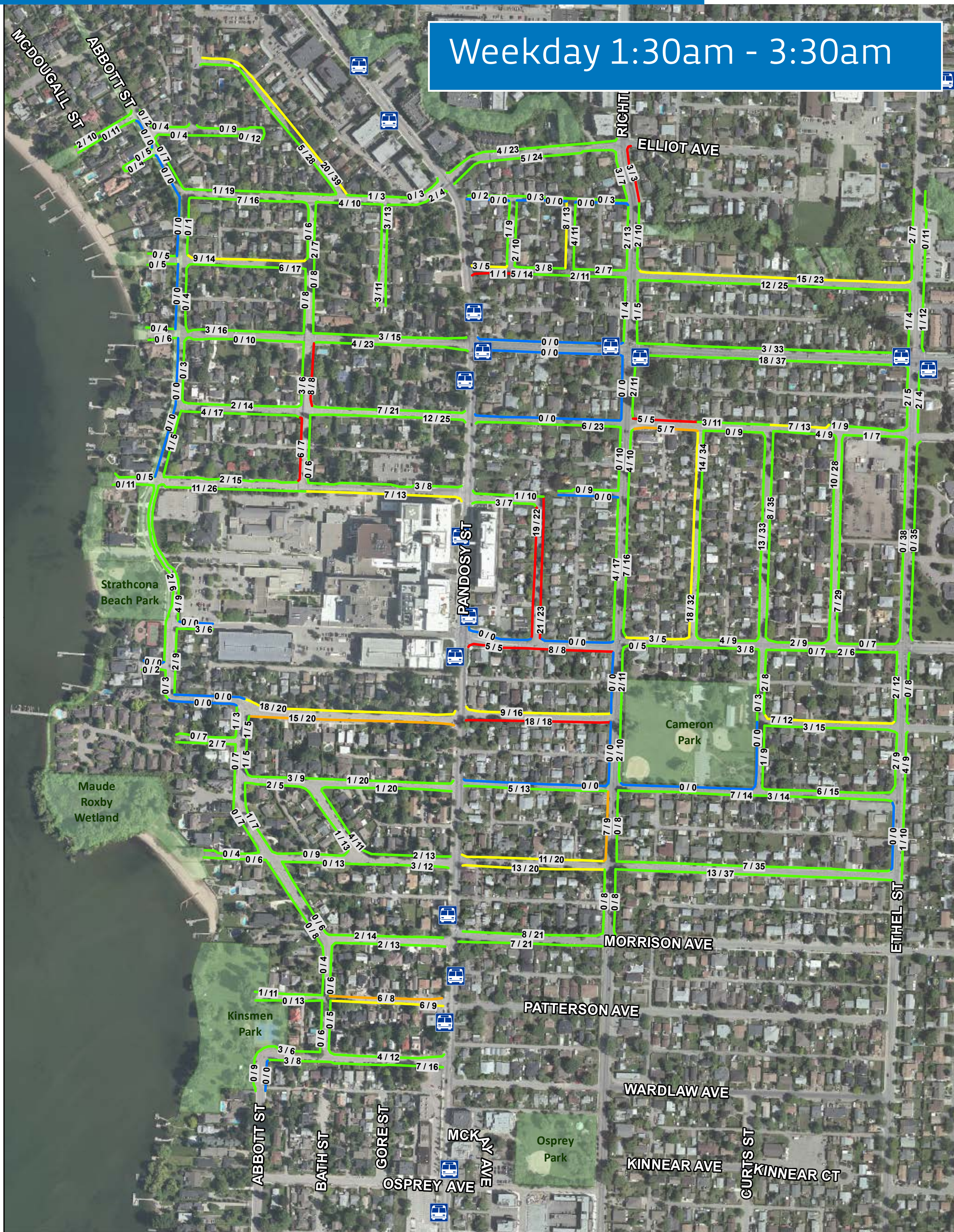
URBAN
systems

FIGURE A3


Hospital Area Plan On-Street Parking

November 2016

CURRENT CONDITIONS - OCCUPANCY



Weekday 1:30am - 3:30am



City of Kelowna

Hospital Area
On-Street Parking Plan




**Parking Occupancy
(1:30 am June 2016)**

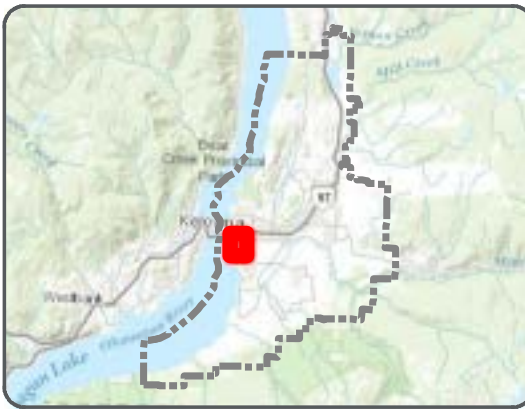
Legend

Existing Occupancy

- █ 0% - 50%
- █ 51% - 70%
- █ 71% - 85%
- █ 86% - 100%
- █ No Parking

10 / 20 Spaces Occupied / Spaces Available

-  Bus Stop
-  Parks
-  Schools



The accuracy & completeness of information shown on this drawing is not guaranteed. It will be the responsibility of the user of the information shown on this drawing to locate & establish the precise location of all existing information whether shown or not.

0 30 60 120 180
Metres

Coordinate System: NAD 1983 UTM Zone 11N
Scale: 1:5,000

Data Sources: Data provided by - City of Kelowna

Project #: 0467.0424.05
Author: RB
Checked: XX
Status: **- DRAFT -**
Revision: A
Date: 2016 / 10 / 6

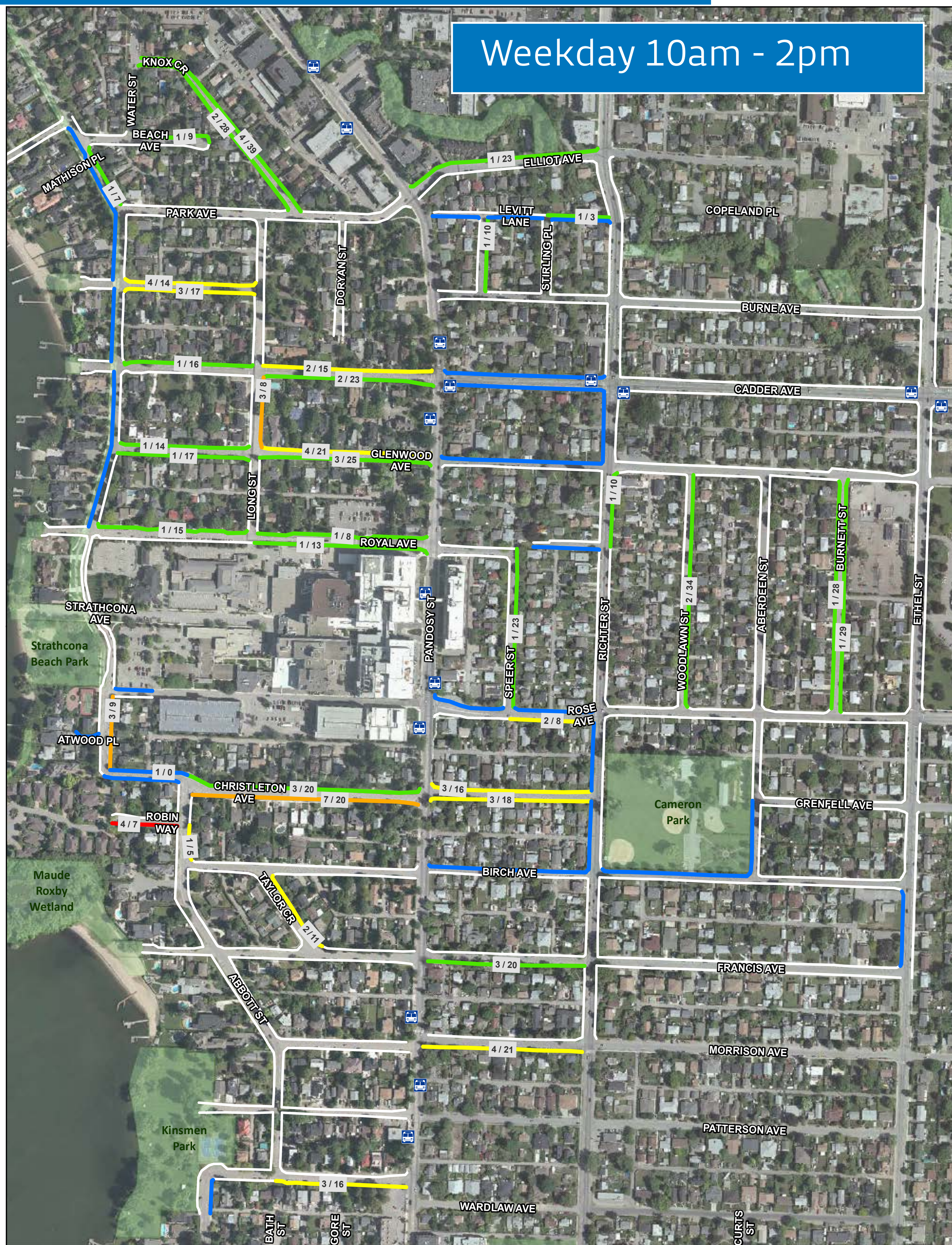
URBAN systems


FIGURE A4

Hospital Area Plan On-Street Parking

November 2016

CURRENT CONDITIONS - PERMIT HOLDERS








Hospital Area
On-Street Parking Plan


Visitor and Residential Parking
Permit Count -Daytime
May 2016

Legend

- 1% - 15%
- 16% - 30%
- 31% - 45%
- 46% - 60%
- No Parking
- No Permits (White)

Total Permits / Spaces Available

-  Bus Stop
-  Parks
-  Schools



The accuracy & completeness of information shown on this drawing is not guaranteed. It will be the responsibility of the user of the information shown on this drawing to locate & establish the precise location of all existing information whether shown or not.

0 25 50 100 150
Metres

Coordinate System:
NAD 1983 UTM Zone 11N

Scale:
1:4,500

Data Sources:
Data provided by -
City of Kelowna

Project #: 0467.0424.05
Author: RB
Checked: XX
Status: **- DRAFT -**
Revision: A
Date: 2016 / 10 / 6

URBAN
systems

FIGURE A6

Hospital Area Plan On-Street Parking

November 2016

PREVIOUS PUBLIC ENGAGEMENT



229

survey respondents said they live in the hospital area

68%

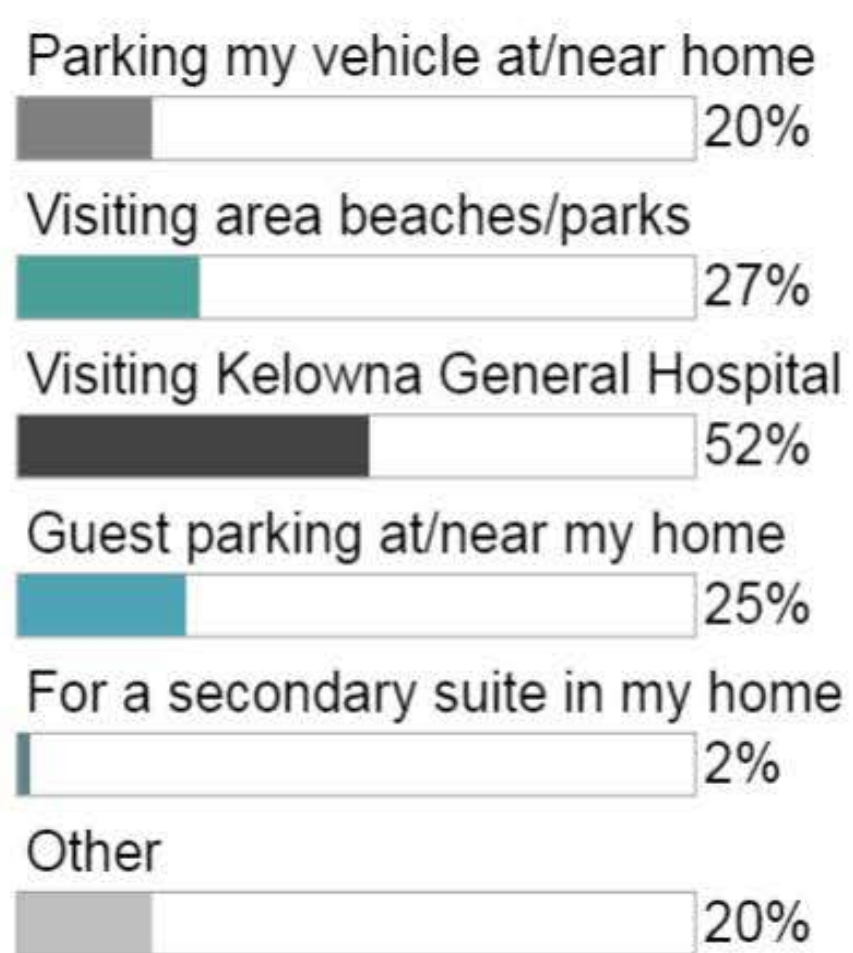
use on-street parking in the area or have visitors, patients or clients who do

1/3

use on-street parking once a month or less

Here's what we heard...

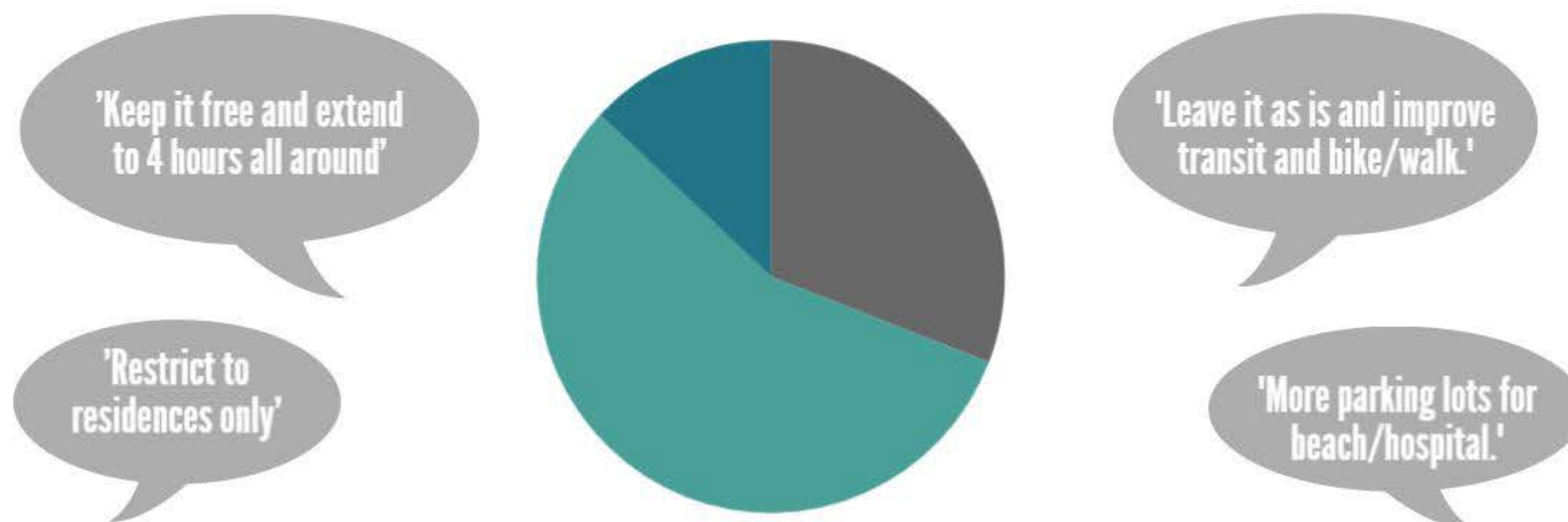
Purpose for on-street parking use



Top 3 actions that would improve on-street parking

- Enhanced/modified parking restrictions
- Improved signage, information, maps or education
- Improved cycling or walking facilities

General Themes



Existing time limits within hospital area

■ Satisfactory (31%) ■ Should be relaxed (56%)
■ Should be more restrictive (13%)

*Results are not statistically valid.

Hospital Area Plan On-Street Parking

November 2016

GUIDING PRINCIPLES FOR PARKING MANAGEMENT



FOCUS ON EXCELLENT SHORT-TERM PARKING

The City's goal is to provide better short-term public parking and move away from being the primary provider of long-term parking.



SELF-FUNDED PARKING SYSTEM

There are many costs associated with parking: infrastructure, maintenance, equipment, enforcement, upgrades, customer service applications, replacement, land acquisition, management and more. The parking system must continue to pay for itself so taxes are not used for future initiatives or infrastructure.



CUSTOMER SERVICE AND FAIRNESS

Payment options, fair practices and real-time information make parking more accessible, easier to find, eases (or lessens) enforcement and supports active business areas and balanced neighbourhoods.



WORK WITH INSTITUTIONS, BUSINESSES AND DEVELOPERS

Parking policies must coordinate with the private and institutional sectors to ensure efficient and economical ways to address parking and transportation needs.



SUPPORT A MORE BALANCED TRANSPORTATION SYSTEM

Parking is part of the larger transportation picture. We need to get serious about discouraging single-occupant vehicle congestion and encouraging other ways to travel. Inexpensive and plentiful parking will not encourage people to use transit, walk or cycle.

RECOMMENDATIONS



Legend

- Pay Parking 24/7
- Pay Parking 8am-8pm Daily (Unrestricted 8pm-8am)
- Daily 1 Hour 8am-8pm, RPO 8pm-8am
- Resident Parking Only
- Daily 1 Hour Parking - 24/7
- Daily 2 Hour Parking 8am-8pm (Expansion)
- No Parking (Existing Restrictions)

Hospital Area Plan On-Street Parking

November 2016

RECOMMENDATIONS

Previous Public input and the parking occupancy data has been used to develop recommendations focused on ensuring short-term parking is available for use by residents and visitors to the area and to minimize hospital related impacts on residential areas.

Introduce full-time pay parking on the south side of Royal Avenue along the hospital frontage

- ▶ Improve turn over and increase the availability of short term parking near KGH and the Emergency Department
- ▶ Allow patient/visitor parking for longer than two hours
- ▶ Increase opportunities for street cleaning and maintenance

Introduce pay parking on the Abbott Street and Rose Avenue hospital frontages, from 8am – 8pm daily

- ▶ Improve turnover and increase the availability of short term parking near KGH during daytime hours
- ▶ Provide unrestricted evening and overnight parking opportunities in an area that does not affect nearby residences

Change the north side of Royal Avenue between Long and Pandosy Streets from Resident Permit Only Parking to a full-time 1-hour maximum parking zone

- ▶ Recognize this block is often near empty as it is used very little by residents with permits and a significant portion of the block is an Interior Health off-street parking lot
- ▶ Provide additional short term parking options near KGH and the Emergency Department while maintaining a priority for parking by resident permit holders



Hospital Area Plan On-Street Parking

November 2016

RECOMMENDATIONS

Introduce overnight (8pm – 8am) Resident Permit Only Parking for residential blocks closest to the hospital (Glenwood, Christleton, Speer, Abbott, Rose & Atwood)

- ▶ Ensure area residents with permits have access to parking in close proximity to their residence in the evening hours
- ▶ Reduce the impact of 24/7 operations of KGH on the surrounding residential area
- ▶ Encourage use of off-street parking at KGH in the evening and overnight periods
- ▶ Re-assess in one year following implementation to determine if modifications to RPO or area are needed

Introduce full-time Resident Permit Only Parking on both sides of Long Street between Royal and Glenwood Avenues (if agreed to by adjacent residents)

- ▶ Recognize this block is often near capacity, mostly with non-permit vehicles
- ▶ Reduce damage being caused to adjacent properties due to heavy parking traffic on non-urbanized boulevards
- ▶ Create additional opportunities for resident parking with removal of Resident Permit Only Parking on Royal Avenue east of Long Street

Expand existing 2-hour maximum daily parking restrictions to include Richter Street between Glenwood and Elliot Avenues

- ▶ Recognize this unrestricted area often experiences high occupancy levels

Enhance existing Resident Parking Program Council Policy to include criteria and provide a method to consider any future requests for implementation of Resident Permit Only Parking restrictions

- ▶ Focus on customer service and fairness in parking practices

Add additional enforcement patrols in the evening and overnight periods

- ▶ Ensure compliance with new and existing restrictions



Hospital Area Plan On-Street Parking

November 2016