

Boundary Details

	<i>Land Added</i>	<i>Total Land</i>	<i>Water * Added</i>	<i>Total Water *</i>	<i>Total Land & Water *</i>
1905	546	546	0	0	546
1934	0	546	111	111	657
1960 Aug	285	831	114	225	1056
(1105 ha. land, removed Nov. 1960)					
1960 Nov	461	1292	0	225	1517
1964	121	1413	0	225	1638
1965 Nov	6	1419	0	225	1644
1965 Dec	465	1884	0	225	2109
1970	9	1893	0	225	2118
1973 Mar	11	1904	0	225	2129
1973 May	19,372	21,276	816	1041	22,317
1976	109	21,385	0	1041	22,426
1993	1	21,386	0	1041	22,427
1996	2	21,388	0	1041	22,429
1998	0	21,388	3353	4394	25,782
2000	1	21,389	0	4394	25,783
2005 Feb	43	21,432	0	4394	25,826
2006 July	14	21,446	0	4394	25,840

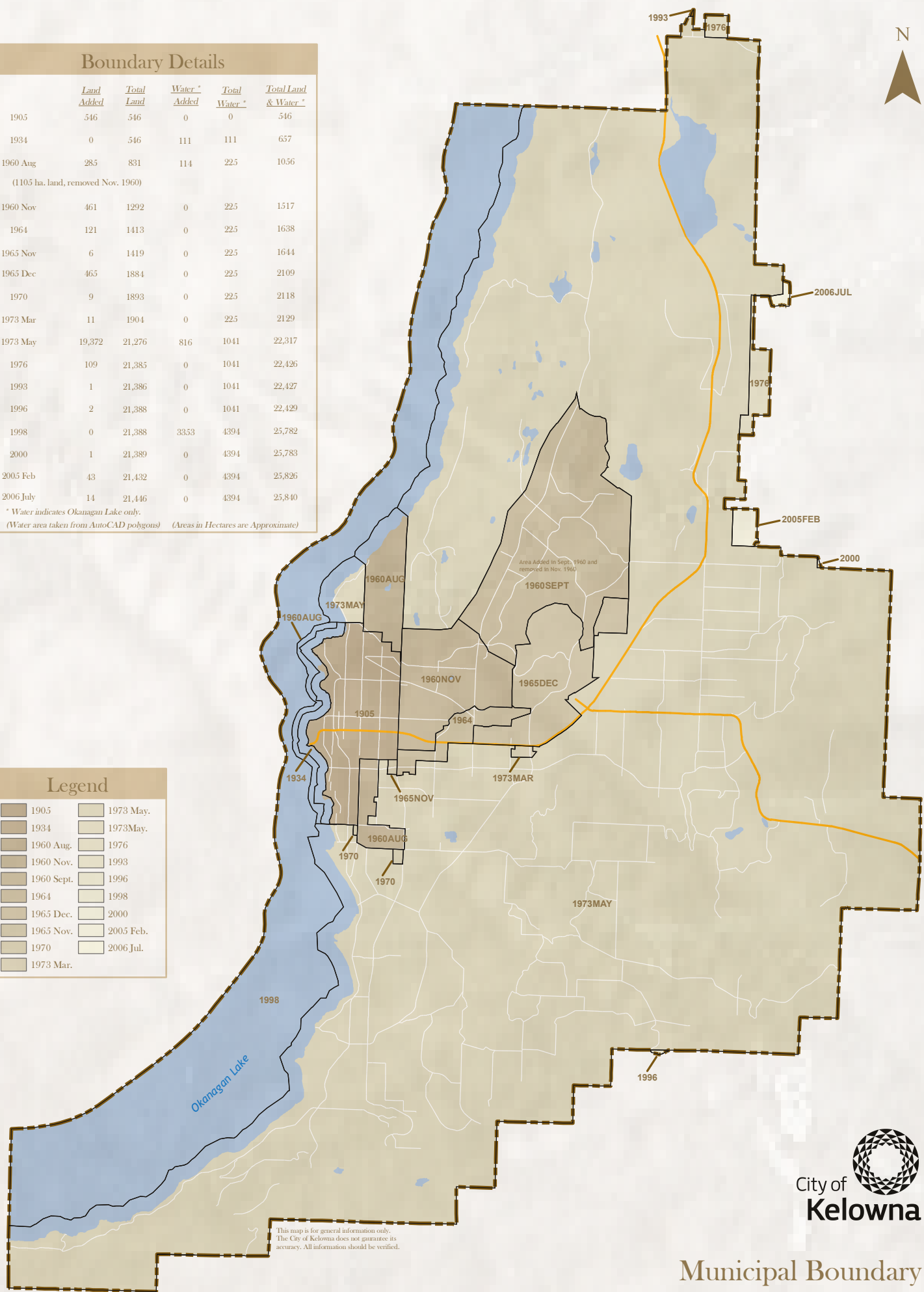
* Water indicates Okanagan Lake only.

(Water area taken from AutoCAD polygons) (Areas in Hectares are Approximate)



Legend

1905	1973 May.
1934	1973 May.
1960 Aug.	1976
1960 Nov.	1993
1960 Sept.	1996
1964	1998
1965 Dec.	2000
1965 Nov.	2005 Feb.
1970	2006 Jul.
1973 Mar.	



This map is for general information only.
The City of Kelowna does not guarantee its
accuracy. All information should be verified.



Rev. April 16/10



Municipal Boundary Historical Map